



**SAFETY DATA SHEET**

Issued: 2016-06-29

This Safety Data Sheet complies with Regulation (EC) No 1907/2006, 1272/2008, ISO 11014-1 and ANSI Z400.1

**Sureweld 10P Plus**

136-002

**SECTION 1: Identification of the substance/mixture and of the company/undertaking**

1.1. Product identifier

Trade name Sureweld 10P Plus

811004902

1.2. Relevant identified uses of the substance or mixture and uses advised against

Use Arc Welding

811004233

811004241

1.3. Details of the supplier of the safety data sheet

SDS created by TDST

811004043

Supplier ESAB DENTON

811004050

Street address 2800 Airport Road  
Denton, TX 76207

811004068

Telephone 1-800-372-2123

811004076

Email sds.esab@esab.se

Web site www.esab.com

1.4. Emergency telephone number

Emergency phone number 1-800-372-2123

Available outside office hours Yes

Other

Classification: AWS A5.1; E6010

**SECTION 2: Hazards identification**

2.1. Classification of the substance or mixture

The product is not classified

2.2. Label elements

More information This product does not require labeling.

2.3. Other hazards

This product contains titanium dioxide which is possibly carcinogenic. This product contains quartz, but normally not in an inhalable fraction. Quartz can cause silicosis and may cause cancer. Avoid eye contact or inhalation of dust from the product. Skin contact is normally no hazard but should be avoided to prevent possible allergic reactions. Persons with a pacemaker should not go near welding or cutting operations until they have consulted their doctor and obtained information from the manufacturer of the device.

When this product is used in a welding process, the most important hazards are welding fumes, heat, radiation and electric shock.



**SAFETY DATA SHEET**

Issued: 2016-06-29

This Safety Data Sheet complies with Regulation (EC) No 1907/2006, 1272/2008, ISO 11014-1 and ANSI Z400.1

**Sureweld 10P Plus**

Fumes: Overexposure to welding fumes may result in symptoms like metal fume fever, dizziness, nausea, dryness or irritation of the nose, throat or eyes. Chronic overexposure to welding fumes may affect pulmonary function. Overexposure to manganese and manganese compounds above safe exposure limits can cause irreversible damage to the central nervous system, including the brain, symptoms of which may include slurred speech, lethargy, tremor, muscular weakness, disturbances and spastic gait.

Heat: Spatter and melting metal can cause burn injuries and start fires.

Radiation: Arc rays can severely damage eyes or skin.

Electricity: Electric shock can kill.

*Other*

Emergency Overview: Coated metal rods in varying colors. This product is normally not considered hazardous when transported. Gloves should be worn when handling to prevent contaminating hands with product dust.

**SECTION 3: Composition/information on ingredients**

3.2. Mixtures

| Chemical name                     | CAS No.<br>EC No.<br>REACH No.               | Concentration | Classification | R-phrase<br>H-phrase |
|-----------------------------------|--|---------------|----------------|----------------------|
| IRON                              | 7439-89-6<br>231-096-4<br>01-2119462838 - 24 | >60%          | -<br>-         | -<br>-               |
| Cellulose                         | 9004-34-6<br>232-674-9<br>-                  | 3 - 7%        | -<br>-         | -<br>-               |
| Manganese powder                  | 7439-96-5<br>231-105-1<br>-                  | 1 - 5%        | -<br>-         | -<br>-               |
| Silicate Binder (Sodium silicate) | 1344-09-8<br>215-687-4<br>-                  | 1 - 5%        | -<br>-         | -<br>-               |
| Titanium oxide                    | 13463-67-7<br>236-675-5<br>-                 | 1 - 5%        | -<br>-         | -<br>-               |
| Chlorite                          | 1318-59-8<br>215-285-9<br>-                  | 0,1 - 1%      | -<br>-         | -<br>-               |
| Iron oxide                        | 1309-37-1<br>215-168-2<br>-                  | 0,1 - 1%      | -<br>-         | -<br>-               |
| Limestone                         | 1317-65-3<br>215-279-6<br>-                  | 0,1 - 1%      | -<br>-         | -<br>-               |
| Quartz                            | 14808-60-7<br>238-878-4                      | 0,1 - 1%      | -<br>STOT RE 1 | -<br>H372            |



**SAFETY DATA SHEET**

Issued: 2016-06-29

This Safety Data Sheet complies with Regulation (EC) No 1907/2006, 1272/2008, ISO 11014-1 and ANSI Z400.1

**Sureweld 10P Plus**

|         |                                  |          |        |        |
|---------|----------------------------------|----------|--------|--------|
| Silicon | -<br>7440-21-3<br>231-130-8<br>- | 0,1 - 1% | -<br>- | -<br>- |
|---------|----------------------------------|----------|--------|--------|

Product based on This product is a preparation of core wire with extruded coating.

**SECTION 4: First aid measures**

4.1. Description of first aid measures

Electric shock: Disconnect and turn off the power. Use a nonconductive material to pull victim away from contact with live parts or wires. If not breathing, begin artificial respiration, preferably mouth-to-mouth. If no detectable pulse, begin Cardio Pulmonary Resuscitation (CPR). call emergency physician to the scene of the accident. Call a physician immediately.

|              |  |
|--------------|--|
| Inhalation   | If breathing has stopped, perform artificial respiration and obtain medical assistance immediately! If breathing is difficult, provide fresh air and call physician.                       |
| Skin contact | For skin burns from arc radiation, promptly flush with cold water. Get medical attention for burns or irritations that persist. To remove dust or particles wash with mild soap and water. |
| Eye contact  | For radiation burns due to arc flash, see physician. To remove dusts or fumes flush with water for at least fifteen minutes. If irritation persists, obtain medical assistance.            |

4.2. Most important symptoms and effects, both acute and delayed

Not applicable

4.3. Indication of any immediate medical attention and special treatment needed

Not applicable

**SECTION 5: Firefighting measures**

5.1. Extinguishing media

|                              |  |
|------------------------------|--|
| Suitable extinguishing media | No specific recommendations for welding consumables. Welding arcs and sparks can ignite combustible and flammable materials. Use the extinguishing media recommended for the burning materials and fire situation. |
|------------------------------|--|

5.2. Special hazards arising from the substance or mixture

Not applicable

5.3. Advice for firefighters

|  |  |
|--|--|
| Special protective equipment for fire-fighters | Wear self-contained breathing apparatus as fumes or vapors may be harmful. |
|--|--|

**SECTION 6: Accidental release measures**

6.1. Personal precautions, protective equipment and emergency procedures



**SAFETY DATA SHEET**

Issued: 2016-06-29

This Safety Data Sheet complies with Regulation (EC) No 1907/2006, 1272/2008, ISO 11014-1 and ANSI Z400.1

**Sureweld 10P Plus**

Refer to Section 8.

**6.2. Environmental precautions**

Refer to Section 13.

**6.3. Methods and material for containment and cleaning up**

Solid objects may be picked up and placed into a container. Liquids or pastes should be scooped up and placed into a container. Wear proper protective equipment while handling these materials. Do not discard as refuse.

**6.4. Reference to other sections**

Refer to Section 8 and Section 13.

**SECTION 7: Handling and storage**

**7.1. Precautions for safe handling**

**Preventive handling precautions**

Handle with care to avoid stings and cuts. Wear gloves when handling welding consumables. Avoid exposure to dust. Do not ingest. Some individuals can develop an allergic reaction to certain materials. Retain all warning and identity labels.

**7.2. Conditions for safe storage, including any incompatibilities**

Keep separate from chemical substances like acids and strong bases, which could cause chemical reactions.

**7.3. Specific end use(s)**

Arc Welding

**SECTION 8: Exposure controls/personal protection**

**8.1. Control parameters**

**Exposure limits**

Use industrial hygiene monitoring equipment to ensure that exposure does not exceed applicable national exposure limits. The following limits can be used as guidance. Unless noted, all values are for 8 hour time weighted averages (TWA). For information about welding fume analysis refer to Section 10.

**National occupational exposure limits**

| Ingredient | CAS no.   | EC No. | Exposure limit mg/m3-ppm | Short-term exposure limit mg/m3-ppm | Ceiling exposure limit mg/m3-ppm | Remark                | Source | Year |
|------------|-----------|--------|--------------------------|-------------------------------------|----------------------------------|-----------------------|--------|------|
| Cellulose  | 9004-34-6 | -      | 5                        | -                                   | -                                | - Respirable fraction | OSHA   | 2016 |
| Cellulose  | 9004-34-6 | -      | 15                       | -                                   | -                                | - Total dust          | OSHA   | 2016 |

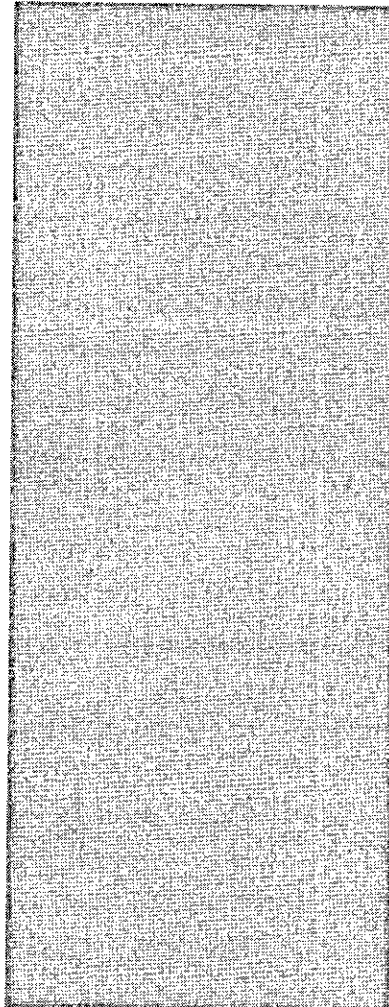


**SAFETY DATA SHEET**

Issued: 2016-06-29

This Safety Data Sheet complies with Regulation (EC) No 1907/2006, 1272/2008, ISO 11014-1 and ANSI Z400.1

**Sureweld 10P Plus**



|                   |                |               |    |   |   |   |   |   |   |  |      |      |
|-------------------|----------------|---------------|----|---|---|---|---|---|---|--|------|------|
| Chlorite          | 1318-5<br>9-8  | -             | -  | - | - | - | - | - | - | No PEL   | OSHA | 2016 |
| Manganese         | 7439-9<br>6-5  | -             | -  | - | - | - | - | 5 | - | -  | OSHA | 2016 |
| Quartz            | 14808-<br>60-7 | -             | -  | - | - | - | - | - | - | 30 mg/m <sup>3</sup> /% SiO <sub>2</sub> +2, total dust, 10 mg/m <sup>3</sup> /%SiO <sub>2</sub> +2, respir. dust(quartz, tripoli), Value calculated from respir. dust formula for quartz(cristobalite, tridymite) | OSHA | 2016 |
| Silicon           | 7440-2<br>1-3  | -             | 5  | - | - | - | - | - | - | Respirable fraction  | OSHA | 2016 |
| Sodium silicate   | 1344-0<br>9-8  | -             | -  | - | - | - | - | - | - | No PEL   | OSHA | 2016 |
| Titanium oxide    | 13463-<br>67-7 | -             | 15 | - | - | - | - | - | - | Total dust   | OSHA | 2016 |
| Calcium carbonate | 1317-6<br>5-3  | -             | 5  | - | - | - | - | - | - | Respirable fraction  | OSHA | 2016 |
| Calcium carbonate | 1317-6<br>5-3  | -             | 15 | - | - | - | - | - | - | Total dust   | OSHA | 2016 |
| Silicon           | 7440-2<br>1-3  | 231-1<br>30-8 | 15 | - | - | - | - | - | - | TOTAL DUST   | OSHA | 2016 |
| IRON              | 7439-8<br>9-6  | 231-0<br>96-4 | -  | - | - | - | - | - | - | NO PEL   | OSHA | 2016 |

**8.2. Exposure controls**

Not applicable

**Other**

Avoid exposure to welding fumes, radiation, spatter, electric shock, heated materials and dust. Train welders to avoid contact with live electrical parts and insulate conductive parts.



**Ventilation**

Use respirator or air supplied respirator when welding or brazing in a confined space, or where local exhaust or ventilation is not sufficient to keep exposure values within safe limits. Use special care when welding painted or coated steels since hazardous substances from the coating may be emitted. Ensure sufficient ventilation, local exhaust, or both, to keep welding fumes and gases from breathing zone and general area.



**Personal protective equipment**

Wear hand, head, eyes, ear and body protection like welders gloves, helmet or face shield with filter lens, safety boots, apron, arm and shoulder protection. Keep protective clothing clean and dry.



This Safety Data Sheet complies with Regulation (EC) No 1907/2006, 1272/2008, ISO 11014-1 and ANSI Z400.1

## Sureweld 10P Plus

### SECTION 9: Physical and chemical properties

#### 9.1. Information on basic physical and chemical properties

|  |                                      |
|--|--------------------------------------|
| Appearance                                     | Steel rod with extruded flux coating |
| Appearance, colour                             | Varying color                        |
| Appearance, physical state                     | Solid                                |
| Auto-ignition temperature                      | Not applicable                       |
| Decomposition temperature                      | No data available                    |
| Evaporation rate                               | Not applicable                       |
| Explosive properties                           | Not applicable                       |
| Flammability (solid, gas)                      | Not applicable                       |
| Flash point                                    | Not applicable                       |
| Initial boiling point and boiling range        | No data available                    |
| Melting point                                  | >1300°C / >2300°F                    |
| Melting point / freezing point                 | Not applicable                       |
| Odour  | Not applicable                       |
| Odour threshold                                | Not applicable                       |
| Oxidising properties                           | Not applicable                       |
| Partition coefficient: n-octanol / water       | Not applicable                       |
| pH value                                       | Not applicable                       |
| Relative density                               | No data available                    |
| Solubility                                     | No data available                    |
| Upper / lower flammability or explosive limits | No data available                    |
| Vapour density                                 | Not applicable                       |
| Vapour pressure                                | Not applicable                       |
| Viscosity                                      | Not applicable                       |
| Volatility                                     | Not applicable                       |

#### 9.2. Other information



**SAFETY DATA SHEET**

Issued: 2016-06-29

This Safety Data Sheet complies with Regulation (EC) No 1907/2006, 1272/2008, ISO 11014-1 and ANSI Z400.1

**Sureweld 10P Plus**

Not applicable

**SECTION 10: Stability and reactivity**

*10.1. Reactivity*

**Reactivity** Contact with chemical substances like acids or strong bases could cause generation of gas.

*10.2. Chemical stability*

**Chemical stability** Stable at normal conditions

*10.3. Possibility of hazardous reactions*

**Possibility of hazardous reactions** Not applicable

*10.4. Conditions to avoid*

**Conditions to avoid** This product is only intended for normal welding purposes.

*10.5. Incompatible materials*

**Incompatible materials** Not applicable

*10.6. Hazardous decomposition products*

**Hazardous decomposition products** When this product is used in a welding process, hazardous decomposition products would include those from the volatilization, reaction or oxidation of the materials listed in Section 3 and those from the base metal and coating.  
The amount of fumes generated from manual metal arc welding varies with welding parameters and dimensions, but is generally no more than 5 to 15 g/kg consumable.  
Fumes from this product may contain compounds of the following chemical elements: Fe, O, Na, Mg, Al, Si, Ca, Mn, and Ti. The rest is not analyzed, according to available standards.

*Other*

Refer to applicable national exposure limits for fume compounds, including those exposure limits for fume compounds found in Section 8.

Manganese has a low exposure limit, in some countries, that may be easily exceeded.

Reasonably expected gaseous products would include carbon oxides, nitrogen oxides and ozone. Air contaminants around the welding area can be affected by the welding process and influence the composition and quantity of fumes and gases produced.

**SECTION 11: Toxicological information**

*11.1. Information on toxicological effects*

**Information on toxicological effects** Inhalation of welding fumes and gases can be dangerous to your health. Classification of welding fumes is difficult because of varying base materials, coatings, air contamination and processes.  
####The International Agency for Research on Cancer has classified welding fumes as possibly carcinogenic to humans (Group 2B).

**acute toxicity** Overexposure to welding fumes may result in symptoms like metal fume fever, dizziness, nausea, dryness or irritation of the nose, throat or eyes.

**SAFETY DATA SHEET**

Issued: 2016-06-29



This Safety Data Sheet complies with Regulation (EC) No 1907/2006, 1272/2008, ISO 11014-1 and ANSI Z400.1

**Sureweld 10P Plus**

|                                |                |
|--------------------------------|----------------|
| skin corrosion/irritation      | Not applicable |
| serious eye damage/irritation  | Not applicable |
| Respiratory/skin sensitization | Not applicable |
| germ cell mutagenicity         | Not applicable |
| Genotoxicity                   | Not applicable |
| carcinogenicity                | Not applicable |
| Repeated dose toxicity         | Not applicable |
| reproductive toxicity          | Not applicable |
| STOT-single exposure           | Not applicable |
| STOT-repeated exposure         | Not applicable |
| Aspiration hazard              | Not applicable |

*Other*

|                  |   |
|------------------|---|
| Long term effect | Chronic toxicity: Overexposure to welding fumes may affect pulmonary function. Overexposure to manganese and manganese compounds above safe exposure limits can cause irreversible damage to the central nervous system, including the brain, symptoms of which may include slurred speech, lethargy, tremor, muscular weakness, disturbances and spastic gait. Prolonged inhalation of titanium dioxide above safe exposure limits can cause cancer. Inhalable quartz is a respiratory carcinogen; however, the process of welding converts crystalline quartz to the amorphous form which is not considered to be a carcinogen. |
|------------------|---|

**SECTION 12: Ecological information***12.1. Toxicity*

Not applicable

*12.2. Persistence and degradability*

Not applicable

*12.3. Bioaccumulative potential*

Not applicable

*12.4. Mobility in soil*

Not applicable

*12.5. Results of PBT and vPvB assessment*

Not applicable

*12.6. Other adverse effects*





This Safety Data Sheet complies with Regulation (EC) No 1907/2006, 1272/2008, ISO 11014-1 and ANSI Z400.1

## Sureweld 10P Plus

Not applicable

### Other

Welding consumables and materials could degrade/weather into components originating from the consumables or from the materials used in the welding process. Avoid exposure to conditions that could lead to accumulation in soils or groundwater.

## SECTION 13: Disposal considerations

### 13.1. Waste treatment methods

#### Disposal considerations

Discard any product, residue, disposable container or liner in an environmentally acceptable manner, in full compliance with federal and local regulations. Use recycling procedures if available.

USA RCRA: This product is not considered hazardous waste if discarded.

Residues from welding consumables and processes could degrade and accumulate in soils and groundwater. Welding slag from this product typically contains mainly the following components originating from the coating of the electrode: Fe, O, Na, Mg, Al, Si, Ca, Mn, and Ti.

## SECTION 14: Transport information

### 14.1. UN number

Not applicable

### 14.2. UN proper shipping name

Not applicable

### 14.3. Transport hazard class(es)

Not applicable

### 14.4. Packing group

Not applicable

### 14.5. Environmental hazards

Not applicable

### 14.6. Special precautions for user

Not applicable

### 14.7. Transport in bulk according to Annex II of Marpol and the IBC Code

Not applicable

## SECTION 15: Regulatory information

### 15.1 Safety, health and environmental regulations/legislation specific for the substance or mixture



# SAFETY DATA SHEET

Issued: 2016-06-29

This Safety Data Sheet complies with Regulation (EC) No 1907/2006, 1272/2008, ISO 11014-1 and ANSI Z400.1

## Sureweld 10P Plus

Other regulations, limitations and legal regulations

Canada: WHMIS classification: Class D; Division 2, Subdivision A - Canadian Environmental Protection Act (CEPA): All constituents of these products are on the Domestic Substance List (DSL).

USA: This product contains or produces a chemical known to the state of California to cause cancer and birth defects (or other reproductive harm). (California Health & Safety Code § 25249.5 et seq.)

United States EPA Toxic Substance Control Act: All constituents of this product are on the TSCA inventory list or are excluded from listing.

CERCLA/SARA Title III Reportable Quantities (RQs) and/or Threshold Planning Quantities (TPQs): Product is a solid solution in the form of a solid article.

- Spills or releases resulting in the loss of any ingredient at or above its RQ require immediate notification to the National Response Center and to your Local Emergency Planning Committee. Section 311 Hazard Class

- As shipped: Immediate In Use: Immediate delayed

EPCRA/SARA Title III 313 Toxic Chemicals: The following metallic components are listed as SARA 313 "Toxic Chemicals" and potential subject to annual SARA 313 reporting. See Section 3 for weight percent.

Manganese: 1.0% de minimis concentration

### 15.2. Chemical safety assessment

Chemical safety assessment

No

#### Other

Read and understand the manufacturer's instructions, your employer's safety practices and the health and safety instructions on the label. Observe any federal and local regulations. Take precautions when welding and protect yourself and others.

WARNING: Welding fumes and gases are hazardous to your health and may damage lungs and other organs. Use adequate ventilation. ELECTRIC SHOCK can kill.

ARC RAYS and SPARKS can injure eyes and burn skin.

Wear correct hand, head, eye and body protection.

## SECTION 16: Other information

Changes to previous revision

This Safety Data Sheet has been revised due to modifications to Sections 1-16.

References to key literature and data sources

Refer to ESAB "Welding & Cutting - Risks and Measures", F52-529 "Precautions and Safe Practices for Electric Welding and Cutting" and F2035 "Precautions and Safe Practices for Gas Welding, Cutting and Heating" available from ESAB, and to:

USA: Contact ESAB at [www.esabna.com](http://www.esabna.com) or 1-800 ESAB-123 if you have any questions about this SDS.

American National Standard Z49.1 "Safety in Welding and Cutting", ANSI/AWS F1.5 "Methods for Sampling and Analyzing Gases from Welding and Allied Processes", ANSI/AWS F1.1 "Method for Sampling Airborne Particles Generated by Welding and Allied Processes", AWSF3.2M/F3.2 "Ventilation Guide for Weld Fume", American Welding Society, 550 North Le Jeune Road, Miami Florida 33135. Safety and Health Fact Sheets available from AWS at [www.aws.org](http://www.aws.org).

OSHA Publication 2206 (29 C.F.R. 1910), U.S. Government Printing Office, Superintendent of

# SAFETY DATA SHEET

Issued: 2016-06-29



This Safety Data Sheet complies with Regulation (EC) No 1907/2006, 1272/2008, ISO 11014-1 and ANSI Z400.1

## Sureweld 10P Plus

Documents, P.O. Box 371954, Pittsburgh, PA 15250-7954

American Conference of Governmental Hygienists (ACGIH), Threshold Limit Values and Biological Exposure Indices, 6500 Glenway Ave., Cincinnati, Ohio 45211, USA.

NFPA 51B "Standard for Fire Prevention During Welding, Cutting, and Other Hot Work" published by the National Fire Protection Association, 1 Batterymarch Park, Quincy, MA 02169.

UK: WMA Publication 236 and 237, "Hazards from Welding Fume", "The arc welder at work, some general aspects of health and safety".

Germany: Unfallverhütungsvorschrift BGV D1, "Schweißen, Schneiden und verwandte Verfahren".

Canada: CSA Standard CAN/CSA-W117.2-01 "Safety in Welding, Cutting, and Allied Processes".

This product has been classified according to the hazard criteria of the CPR and the SDS contains all the information required by the CPR.

### Phrase meaning

STOT RE 1 - Specific Target Organ Toxicity — Repeated exposure, hazard category 1  
H372 - Causes damage to organs through prolonged or repeated exposure.

### Other

### Additional information

ESAB requests the users of this product to study this Safety Data Sheet (SDS) and become aware of product hazards and safety information. To promote safe use of this product a user should:

- notify its employees, agents and contractors of the information on this SDS and any product hazards/safety information.
- furnish this same information to each of its customers for this product.

- request such customers to notify employees and customers for the same product hazards and safety information.

The information herein is given in good faith and based on technical data that ESAB believes to be reliable. Since the conditions of use is outside our control, we assume no liability in connection with any use of this information and no warranty, expressed or implied is given. Contact ESAB for more information.